

# FACILITY TYPES

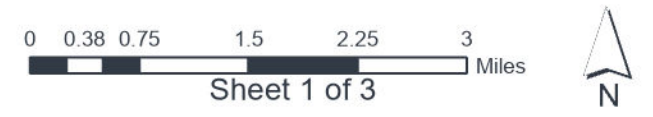
Facility classifications for mobility and control of access planning through 2050

## CITY OF CONCORD

### Comprehensive Transportation Plan

Facility Types and Control of Access  
( Listed in Order of Mobility Function )

	Existing	Projected	New Location
Freeway			
Expressway (Multilane Divided)			
Boulevard (Multilane Divided)			
Major Thoroughfare (Multilane Undivided)			
Major Thoroughfare (2 Lane)			
Minor Thoroughfare			
Major Collector			



COMPREHENSIVE TRANSPORTATION PLAN FOR THE CITY OF CONCORD AND PORTIONS OF THE CABARRUS-ROWAN METROPOLITAN PLANNING ORGANIZATION (CRMPO).  
Official Transportation Plan Map approved pursuant to the NC GENERAL STATUTE 136-66.2 and The City of Concord Code of Ordinances. This the \_\_\_ Day of \_\_\_\_\_, 2024.

Office of the City Clerk  
City of Concord  
35 Cabarrus Ave W.  
Concord, NC 28025  
(701) 920-5205

Location: City of Concord, Cabarrus County, North Carolina  
Townships 1, 2, 3, 4, 5, 11, 12

Prepared by: City of Concord Transportation Department

OFFICIAL TRANSPORTATION PLAN MAP

This the \_\_\_ Day of \_\_\_\_\_, 2024.

Director of Transportation Department  
CITY OF CONCORD  
NORTH CAROLINA

# DRAFT

ATTEST: \_\_\_\_\_  
Kim J. Deason, City Clerk      William C. Dusch, Mayor

This map is an exception to the definition of a subdivision of land.

Transportation Director \_\_\_\_\_ Date \_\_\_\_\_

City of Concord - Planning and Neighborhood Development Department  
This map is an exception to the definition of a subdivision, and is in compliance with all application provision of the Concord Development Ordinance.

Director \_\_\_\_\_ Date \_\_\_\_\_

State of North Carolina  
County of Cabarrus

I, \_\_\_\_\_ Review Officer of Cabarrus County, certify that the map or plat to which this certification is affixed meets all statutory requirements for recording.

Review Officer \_\_\_\_\_

Date \_\_\_\_\_

## MECKLENBURG COUNTY