

Budget in Brief: FY 2023

Total Citywide Budget

\$302,825,728



Property tax rate is 48¢ per \$100 of valuation - the same since 2013!



No residential or commercial rate increases for Electric, Water, Storm water, or Sewer.



40¢ monthly increase to the Solid Waste fee due to more expensive service costs.



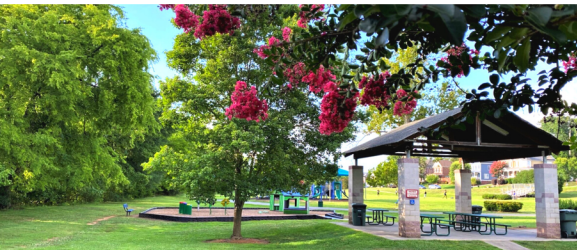
48 new positions - citywide total of 1,179 full-time & 41 part-time positions.



\$6.49M in dedicated funding for Council's Strategic Priorities: Transportation, Affordable Housing, and Parks & Recreation.

"The proposed budget not only maintains the excellent service for Team Concord that sets our City apart, but it also builds upon our strengths, tackles existing challenges, and in doing so seeks to enhance the quality of our daily lives."

- Lloyd Payne, Concord City Manager



Prepare park projects for GO Bond vote this fall by starting park and greenway design work.



Strategic investment in substations, waterlines, culverts, streets, and water treatment plants to maintain our current infrastructure.



Provide better customer serve by transitioning Solid Waste Services in-house, starting with bulky waste collection in July.

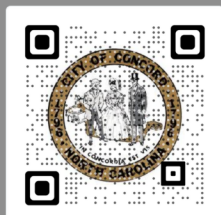


Keep people safe by adding a new ladder crew at Fire Station 10 & providing a SRO for the new middle school on Roberta Road.



Concord
NORTH CAROLINA

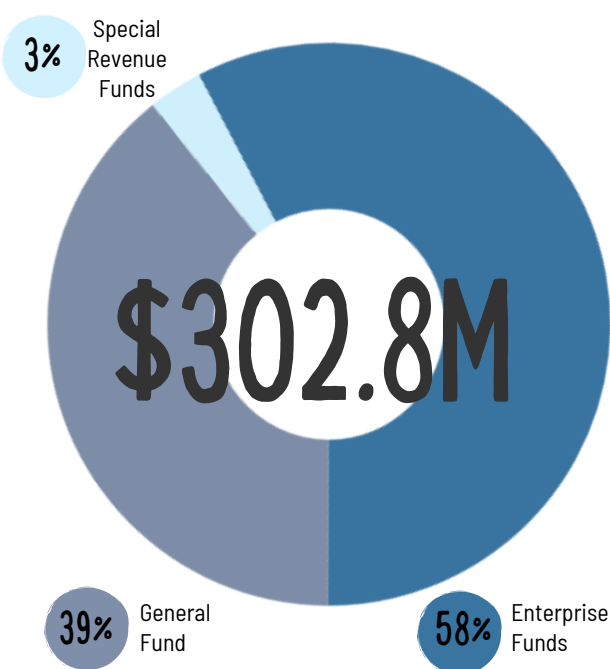
Use the QR Code on the right for more detailed information or visit concordnc.gov/budget!



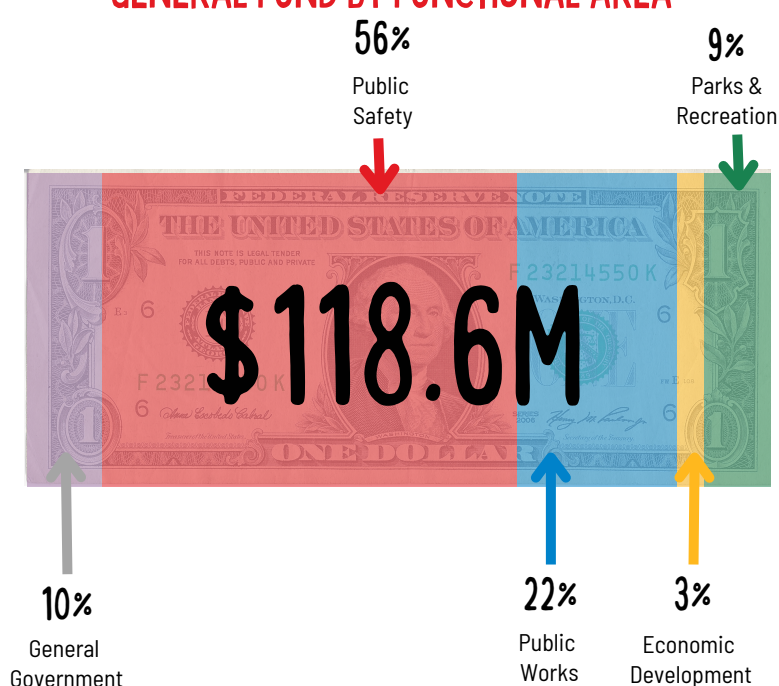
FY 2022-2023 CITY BUDGET

BUDGET: THE NUMBERS

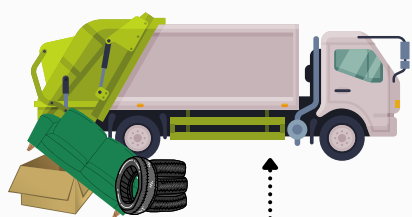
OVERALL BY FUND TYPE



GENERAL FUND BY FUNCTIONAL AREA

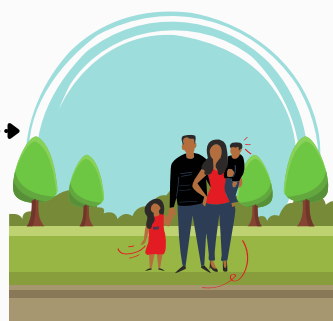


FY 2023 STRATEGIC INVESTMENTS



City Workers begin collecting Bulky Waste on July 1st.

Design work continues for multiple potential Park projects to prepare for November 8th Bond Referendum.

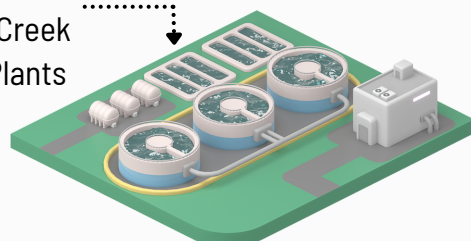


\$2.9 Million for Street Resurfacing



\$1.4 Million for Affordable Housing Projects

\$2.5 Million for improvements at Hillgrove & Coddle Creek Water Treatment Plants



TEAM CONCORD

COMPENSATION ADJUSTMENTS

2% Cost of Living
1-3% Merit Increase
1.5% Career Development

48 NEW POSITIONS

Fire
Solid Waste
Airport
Buildings & Grounds
Police
Parks & Rec
Electric
Water

1,198.2

Full-Time Equivalent Positions

TAX RATE

For a home valued at \$217,000, annual property taxes = \$1,042.

Same rate since 2013!

48¢

per \$100 of assessed value



CAPITAL PROJECT HIGHLIGHTS BY DISTRICT

