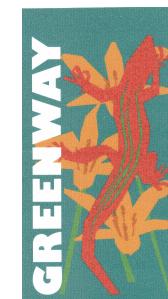


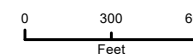
Hector Henry Greenway (Moss Creek)

Legend

- Street Centerline
- 911 Emergency Markers
- Greenway
- Parking



Coordinate System - NC State Plane NAD83

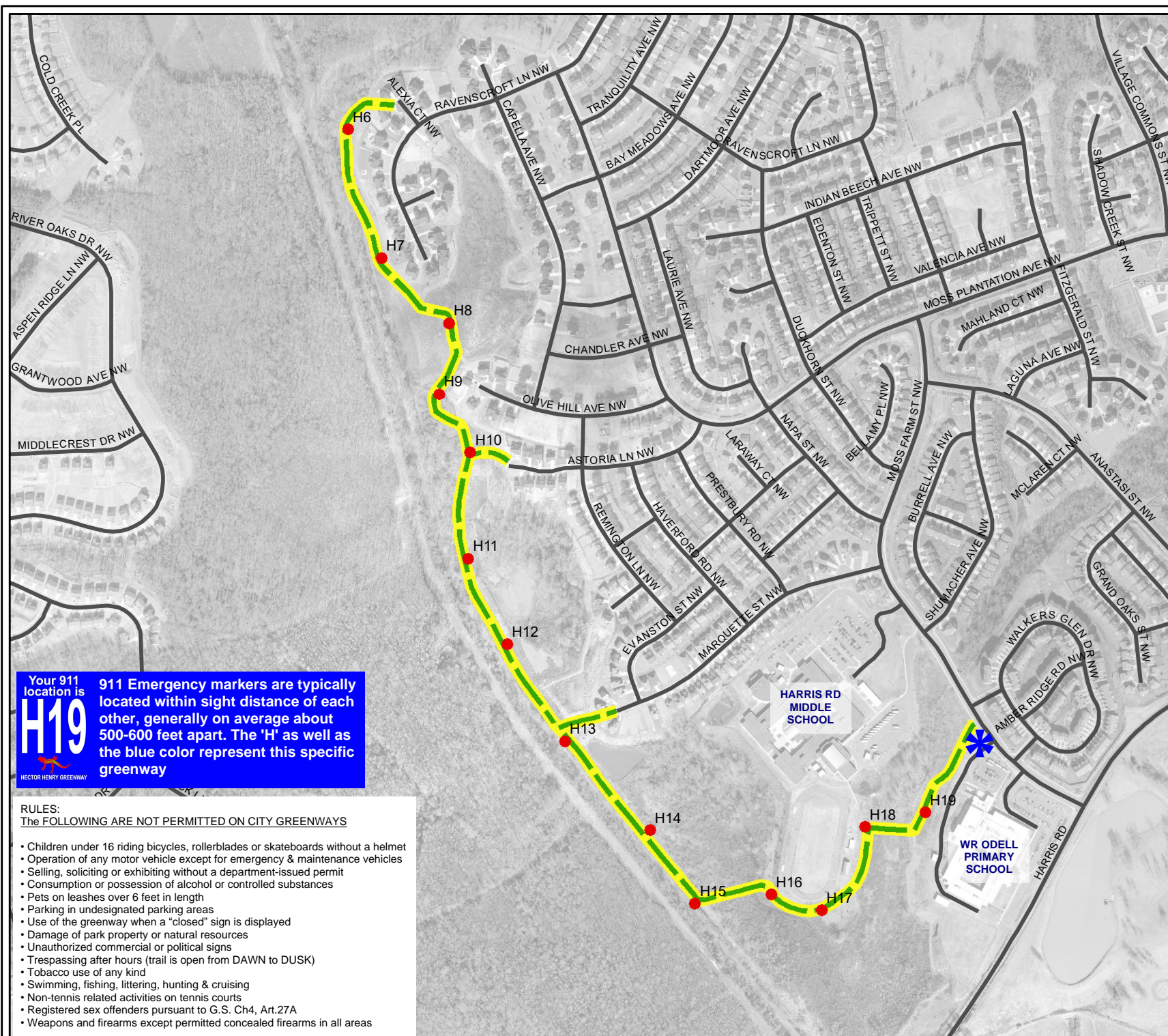


City of Concord
North Carolina

Greenway managed by:
Parks & Recreation Department

Map prepared by:
Planning & Neighborhood Development Dept
Geographic Information Systems

March 2021



Your 911 location is **H19** 911 Emergency markers are typically located within sight distance of each other, generally on average about 500-600 feet apart. The 'H' as well as the blue color represent this specific greenway

RULES:
The FOLLOWING ARE NOT PERMITTED ON CITY GREENWAYS

- Children under 16 riding bicycles, rollerblades or skateboards without a helmet
- Operation of any motor vehicle except for emergency & maintenance vehicles
- Selling, soliciting or exhibiting without a department-issued permit
- Consumption or possession of alcohol or controlled substances
- Pets on leashes over 6 feet in length
- Parking in undesignated parking areas
- Use of the greenway when a "closed" sign is displayed
- Damage of park property or natural resources
- Unauthorized commercial or political signs
- Trespassing after hours (trail is open from DAWN to DUSK)
- Tobacco use of any kind
- Swimming, fishing, littering, hunting & cruising
- Non-tennis related activities on tennis courts
- Registered sex offenders pursuant to G.S. Ch4, Art.27A
- Weapons and firearms except permitted concealed firearms in all areas