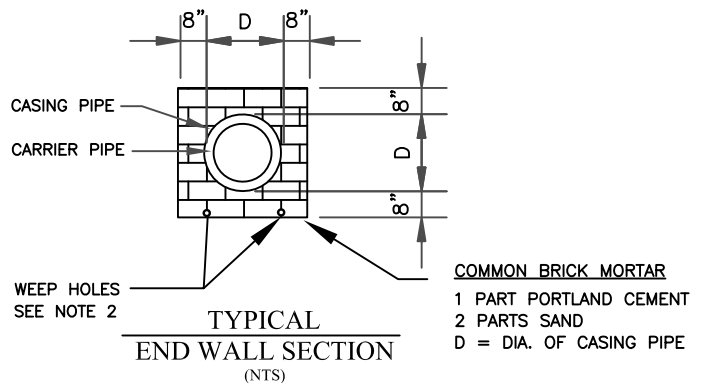


**TYPICAL  
PIPE CROSSING UNDER  
RAILROAD RIGHT OF WAYS**  
(NTS)

**GENERAL NOTES:**

1. SEE DRAWINGS FOR LOCATION, SIZE AND LENGTH OF STEEL PIPE CASING AND RESTRAINED DUCTILE IRON CARRIER PIPE.
2. INSTALL TWO (2) 1-INCH DRAINS EACH SIDE OF CARRIER PIPE IN DOWNHILL END WALL.
3. ENCASMENT PIPE UNDER THE RAILROAD TRACKS AND ACROSS THE RAILROAD RIGHT OF WAYS SHALL EXTEND THE GREATER OF THE FOLLOWING DISTANCES, AS MEASURED AT A RIGHT ANGLE TO THE CENTER LINE OF THE TRACK:
  - ACROSS THE ENTIRE WIDTH OF THE RAILROAD RIGHT OF WAY.
  - 3 FEET BEYOND THE DITCH LINE
  - 2 FEET BEYOND THE TOE OF THE SLOPE
  - A MINIMUM DISTANCE OF 25 FEET FROM EACH SIDE OF THE CENTERLINE OF THE OUTSIDE TRACK WHEN CASING PIPE IS SEALED AT BOTH ENDS.
  - BEYOND THE THEORETICAL RAILROAD EMBANKMENT LINE. THIS LINE BEGINS AT A POINT, ON THE EXISTING GRADE, 14 FEET HORIZONTALLY FROM THE CENTERLINE OF THE TRACK AND EXTENDS DOWNWARD ON A 2(HORIZONTAL) TO 1(VERTICAL)SLOPE. THE 14 FEET IS MEASURED 19 INCHES BELOW THE BASE OF THE RAIL.
4. RESTRAINED PUSH-ON JOINT DUCTILE IRON CARRIER PIPE SHALL EXTEND THROUGH RAILROAD RIGHT-OF-WAY AND CASING PIPE ASSEMBLY AT MINIMUM, OR AS INDICATED ON THE APPROVED PLANS. THE MORE RESTRICTIVE CONDITION SHALL APPLY.
5. SEE CITY DETAIL "CASING SPIDER" FOR CASING PIPE AND SPIDER REQUIREMENTS.
6. CATHODIC PROTECTION REQUIREMENT - WHERE CATHODIC PROTECTION IS REQUIRED FOR GAS LINE CROSSINGS, THE CASING PIPE SPIDERS SHALL BE ADVANCE PRODUCTS AND SYSTEMS, INC., STAINLESS STEEL BAND CASING SPIDERS, MODEL SSI, OR EQUAL; AND THE STEEL CASING PIPE IS TO BE UNCOATED STEEL.



		CITY OF CONCORD STANDARD DETAIL			
		INSTALLATION OF CARRIER PIPE WITHIN RAILROAD RIGHT-OF-WAYS			
No.	Date	By	REVISION		
Drawn By:	Checked By:	Approved By:	Date	Sht	of
SVM	MSH		08/18		