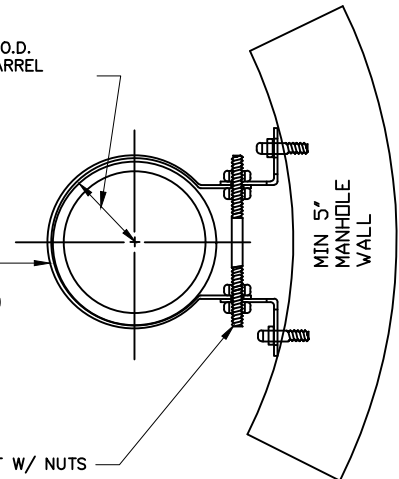


ELEVATION

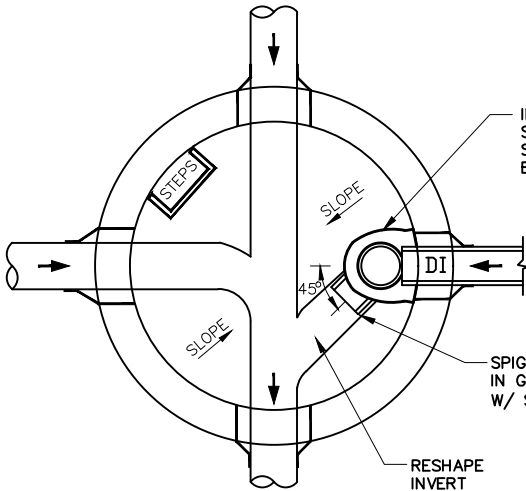
CORE HOLE FOR DUCTILE IRON INFLUENT PIPE WITH CORING MACHINE AND INSTALL FLEXIBLE RUBBER COUPLING. (SEE NOTE #4)

R=1/2 O.D. PIPE BARREL

ADJUSTABLE TYPE 304 STAINLESS STEEL, 11 GAUGE (.1196") CLAMPING BRACKETS WITH 3/8" PINCH BOLT AND NUTS TYPE 18-8 STAINLESS STEEL



SECTION B-B



SECTION A-A

INSIDE DROP BOWL SECURED WITH STAINLESS STEEL BOLTS

SPIGOT EMBEDDED IN GROUT AT 45-DEG W/ SEWER FLOW

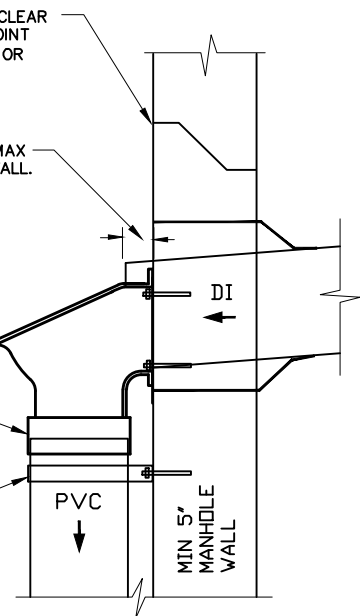
RESHAPE INVERT

TRIM DI PIPE 2" MAX FROM MANHOLE WALL.

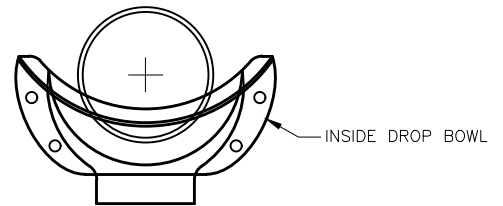
FERNCO FLEXIBLE COUPLING OR EQUAL

ADJUSTABLE TYPE 304 STAINLESS STEEL, 11 GAUGE (.1196") CLAMPING BRACKETS WITH 3/8" PINCH BOLT AND NUTS TYPE 18-8 STAINLESS STEEL

6" MIN CLEAR FROM JOINT (ABOVE OR BELOW)



DETAIL



DROP BOWL MOUNTING POSITION

NOTES:

1. INSTALL "RELINER-DURAN, INC." OR EQUAL INSIDE DROP BOWL AND ASSOCIATED APPURTENANCES, ACCORDING TO MANUFACTURE'S RECOMMENDATIONS. ALL ADJUSTABLE CLAMPING BRACKETS AND ASSOCIATED APPURTENANCES SHALL BE STAINLESS STEEL. ANNULAR SPACES TO BE GROUT FILLED AND EPOXY COATED.
2. PIPING FOR INSIDE DROP SHALL BE SDR 35 PVC CONFORMING TO ASTM SPECIFICATION D3034. BOTTOM BEND TO BE 90° SHORT BEND, BELL SPIGOT, OF SDR 35 PVC. SPIGOT OF BEND TO BE TURNED AT 45-DEGREE WITH SEWER FLOW AND SHALL REST DIRECTLY ON EXISTING SHELF. CONSTRUCT MASONRY TROUGH FROM DROP EFFLUENT TO MAIN CHANNEL.
3. LOCATE "RELINER-DURAN, INC." OR EQUAL STAINLESS STEEL ADJUSTABLE CLAMPING BRACKETS WITH ASSOCIATED APPURTENANCES AT PIPE BELL AND ABOVE BELL OF 90° BEND AS SHOWN. ADD EXTRA CLAMPING BRACKETS AS NECESSARY TO MAINTAIN MAXIMUM SPACING OF FOUR FEET AND TO ENSURE A BRACKET IS LOCATED AT EACH PIPE JOINT. (MIN OF 2.)
4. HOLE IN MANHOLE WALL TO BE MADE WITH A CORING MACHINE. INSTALL FLEXIBLE RUBBER COUPLING. CORE HOLE SHALL NOT ENTER CONE SECTION. THE INFLUENT SEWER MAIN PIPE SHALL BE CONSTRUCTED WITH A 10-FOOT (MIN) SEGMENT OF DUCTILE IRON AT EACH DROP MANHOLE. INFLUENT SEWER MAIN SHALL NOT PROTRUDE MORE THAN 2-INCHES INTO THE INTERIOR OF MANHOLE.
5. STEPS SHALL BE RELOCATED IF THEY CONFLICT WITH INSIDE DROP. ANNULAR SPACES TO BE GROUT FILLED AND EPOXY COATED.



CITY OF CONCORD
STANDARD DETAIL
INSIDE DROP MANHOLE
WITH DROP BOWL

No.	Date	By	REVISION	Approved By:	Date	Sht	of
				MSH	07/21	1	1
Drawn By: SVM/BCC			Checked By: PK				