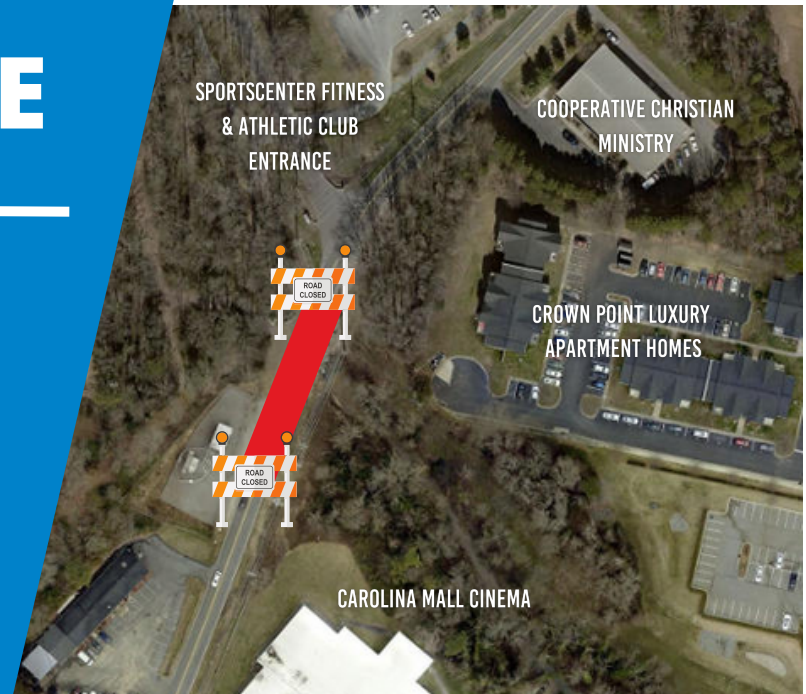


EXTENDED ROAD CLOSURE

Country Club Drive NE

Beginning April 12, 2023



A portion of Country Club Drive NE will be closed to thru traffic between Branchview Drive NE (HWY 3) and Concord Parkway N (HWY 29) beginning April 12, 2023 and lasting approximately 9 months to allow a culvert to be replaced. Businesses and residences on Country Club Drive will remain accessible during the closure.

There will be two detours in place during the closure on Lake Concord Road and Concord Parkway N. Please see the detour map for more information.

**Follow us on social media
for more information:**

